

YEAR 7 DRAMA ROADMAP

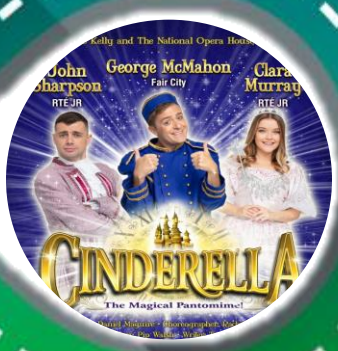
Emily

Process Drama, moving to a new place linking to their transition with basic building block for storytelling and communication



DC1

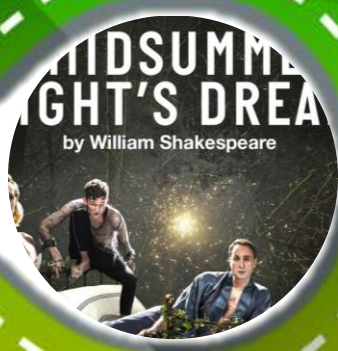
Based on work completed in the previous assessments



Pantomime
Different style of performance, using stock characters, audience interaction, comedy and can include a theatre trip

Greek Theatre

History look at Greeks as well. Explore Greek Chorus, Conventions of Greek Theatre and Oedipus Rex



A Midsummer Night's Dream
Taught at the same time at English, with a focus on the mechanicals, using script, and developing their slapstick comedy approach.

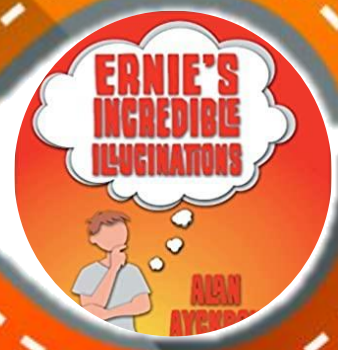
Mask

Exploring the rules of mask, physical characterisation, Comedia Del Arte, and physical comedy



Ernie's Incredible Illusions

Using script, blocking, using stage direction and characterisation



DC2

Based on work completed in the previous assessments

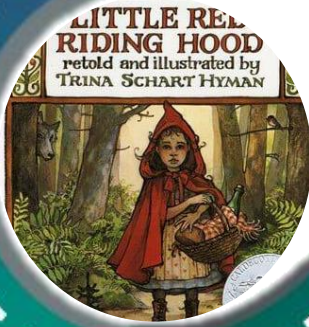


On to Year 8

YEAR 8 DRAMA ROADMAP

Little Red

Process Drama based on fairy tale. Exploring non-naturalism skills to create Drama



Physical Theatre

Learning skills based on Frantic Assembly's canon of movement. Learning how to create a Chair Duet



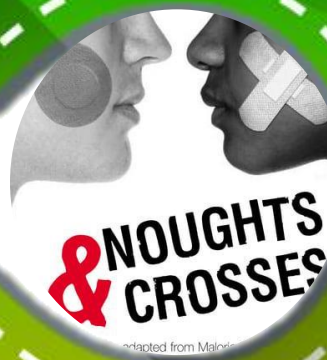
DC1

Based on work completed in the previous assessments



Noughts & Crosses

Using a play script, exploring racial divides, developing character from script



Hit & Run

Process Drama, Focus on personal safety, devising Drama, link to Too Much Punch for Judy

Shakespearean Villains

Taught at the same time as English, exploring three different play extracts and characters, everyone performs a Shakespearean monologue.



Devising from Stimulus

Using different stimulus to explore ideas, use existing skills and create performance work.



DC2

Based on work completed in the previous assessments



On to Year 9

YEAR 9 DRAMA ROADMAP

BLOOD BROTHERS

Exploring Script, characterisation, I Wish I Was Our Sammy and Mickey and Eddie first meet



DNA

Exploring status using contemporary teenage script.

DC1

Based on work completed in the previous assessments



Missing Dan Nolan

Exploration of Mark Wheeler's Verbatim piece on missing school boy, Dan Nolan

Teechers

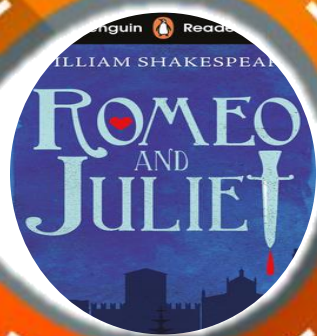
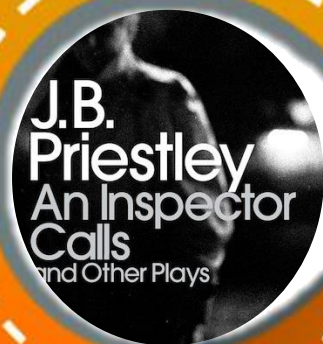
We explore the fast paced, multi-rolling of John Godber, using Bounders an/or Teechers



Y9 Options
Discussion about KS4 GCSE course and the requirements of a role model GCSE student.

An Inspector Calls

We purposely explore An Inspector Calls as they will study it at KS4 in English



Romeo and Juliet

Exploring Shakespeare, building on skills from Y8 and a potential English KS4 text

DC2

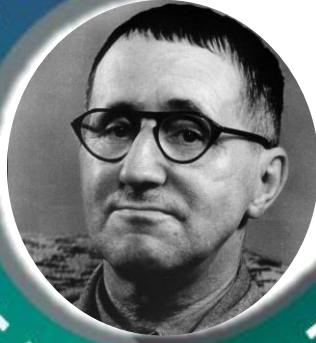
Based on work completed in the previous assessments



Continue to GCSE Drama, and/or use the skills you've developed in your chosen options

Key Stage 4 GCSE Drama – Eduqas ROADMAP

Y10
Initial
introduction
to theatre
and the GCSE
course,
exploring
practitioners
, plays and
styles.



**Component 1
– Devising
Theatre**
40% of the
overall grade.
Teacher
Assessed,
Externally
moderaed

**Component 1
– Devising
Theatre**
-Create, develop
and perform a
piece of devised
theatre



**Component 1
– Devising
Theatre**
-Produce a
portfolio
- Performance 5-
16mins
- Evaluate your
work

**Component 2 –
Performing
from a Text**
- 20% of your
overall grade
- Study two
extracts from the
same play



Year 11

**Component 2 –
Performing
from a Text**
- Performance
lasts between 5-14
minutes.
Performed to a
visiting examiner.



**Component 3
– Interpreting
Theatre**
40% of your
overall.
Written exam
- 1hr 30mins

**Component 3
– Interpreting
Theatre**
A – Play Study
questions
B – Live Theatre
Review



Next steps...
BTEC Level 3 –
Musical Theatre
or Acting
A-Level Theatre
Studies
Explore college
and sixth form