



FLEETWOOD MAC



What is the can you  
for today?



To perform a song by  
Fleetwood Mac

Read 12:51 PM

How are you going  
to achieve this?



Recalling music theory to  
support performance

Identifying the musical  
elements of their music

Read 12:51 PM





London,  
**England** **Pin**

**b. 1967**



## Notable Pieces

Everywhere  
Dreams & The Chain  
Landslide

Fleetwood Mac is a British-American rock band formed in 1967, originally led by guitarist Peter Green. Over the decades, the band evolved with various lineups, most famously the 1975 iteration featuring Stevie Nicks, Lindsey Buckingham, Christine McVie, John McVie, and Mick Fleetwood. Known for their blend of rock, pop, and blues, their albums *Rumours* (1977) and *Fleetwood Mac* (1975) became global hits. The band's turbulent relationships and musical innovation made them an enduring influence on rock.



**Fleetwood Mac** **Follow**





Fleetwood Mac is a British-American rock band formed in 1967, originally led by guitarist Peter Green. Over the decades, the band evolved with various lineups, most famously the 1975 iteration featuring Stevie Nicks, Lindsey Buckingham, Christine McVie, John McVie, and Mick Fleetwood. Known for their blend of rock, pop, and blues, their albums *Rumours* (1977) and *Fleetwood Mac* (1975) became global hits. The band's turbulent relationships and musical innovation made them an enduring influence on rock.



1

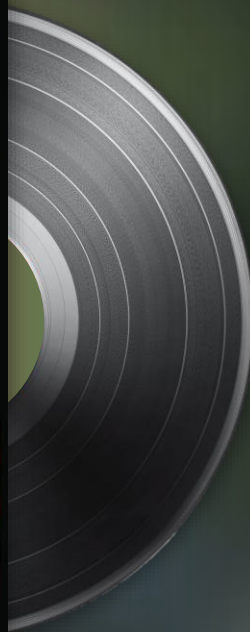
2

3



# Everywhere

Fleetwood Mac



**Fleetwood Mac** [Follow](#)

1987

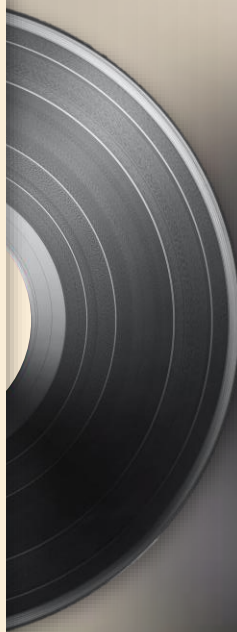






## Dreams & The Chain

Fleetwood Mac



1



2

3



**Fleetwood Mac** [Follow](#)

1977





1

2

3



# Landslide

Fleetwood Mac



Fleetwood Mac

Follow

1975





## Notes

This version is in the original key of E major.

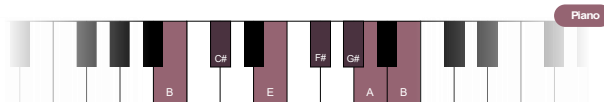
Everywhere  
Fleetwood Mac

## Musical Elements

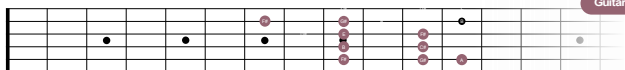
'Everywhere' is in **4/4** time. The tempo is **moderato** (115bpm). The dynamics is mainly **mezzo forte** throughout. The texture is **homophonic** (melody & accompaniment). The form/structure is **Verse-Chorus** form.

## Melody

The melody of 'Everywhere' is made from notes of the **E major scale** only (**E F# G# A B C# D#**):



Piano



Guitar

This guitar scale is using the E major scale "G shape" from the CAGED system.

The melodic movement is a **conjunct** throughout, besides the **disjunct leap** of an **octave** between the **verse** and the **chorus**. Under the main melody is a riff – a catchy, repeated melody - played by the electric guitar. The guitar riff uses the **pentatonic scale** and is **palm muted**.

## Chords

'Everywhere' uses just **four chords**:



E

B E G#



B

B D# F#



C#m

C# E G#



A

C# E A

There are two chord progressions used throughout. The **Intro/verse** progression is **E – B (I – V)** three times, followed by **C#m – A (vi – IV)**, in an **AAAB** harmonic structure. The **chorus** progression goes **C#m – B – A – B**, which in the key of E major is **vi – V – IV – V**. All chords are **diatonic**.

## Intro pt. 1

Intro pt. 1

Piano

Guitar

Bass

Chords: E, B, C#m, A

## Intro pt. 2

Intro pt. 2

Piano

Guitar

Bass

Chords: E, B, C#m, A

## Verse

Verse

Piano

Guitar

Bass

Chords: E, B, C#m, A

## Chorus

Chorus

Piano

Guitar

Bass

Chords: C#m, B, A, B







## Notes

This version is in the original key of C major.



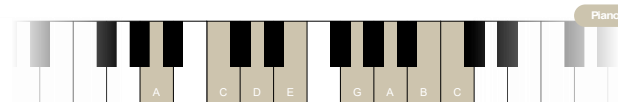
Dreams  
Fleetwood Mac

## Musical Elements

'Dreams' is in **4/4** time. The tempo is **moderato** (120bpm). The dynamics is mainly **mezzo forte** throughout. The texture is **homophonic** (melody & accompaniment). The form/structure is **Verse-Chorus** form.

## Melody

The melody of 'Dreams' is made from notes of the **C major scale** only (**C D E F G A B**).



Piano



Guitar

This guitar scale is using the A minor pentatonic "box shape" with extra notes left of the equator.

The melodic movement is a mixture of **conjunct** and **disjunct** due to the intervals in the scale. There is **syncopation** – notes that are played off-beat – in all sections. There is a lot of **variation** and **contrast** in the melody, though some **rhythmic ideas** are **repeated**.

## Chords

'Dreams' uses just **two chords**



F

F A C

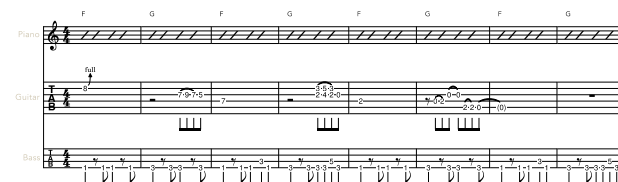


G

G B D

The chord progression throughout is **F – G**. In the key of C major, this is **IV – V**. The song never resolves to the **tonic (I)** chord - C major! The harmonic rhythm of this progression is semibreves. The harmony is grounded by the bass guitar, which plays **root notes**, and occasionally, the **perfect fifth** of the chord.

## Intro



## Verse



## Chorus





## Notes

This version is in the original key of E minor



## Musical Elements

'The Chain' is in 4/4 time. The tempo is **adagio** (74bpm). The dynamics is mainly **mezzo forte** throughout, but **forte** in the **outro**. The texture is homophonic. The form/structure is **Vers-Chorus** form.

## Melody

The melody of 'The Chain' is made from notes of the **E minor/G major scale** only (E F# G A B C D):

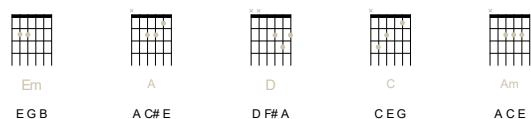


This guitar scale is using the G major scale "G shape" from the CAGED system.

The vocal melody is largely **conjunct** and predominantly uses notes of the **pentatonic scale**. There is a lot of **variation** and **contrast** in the melody, though some **rhythmic ideas** are **repeated**. In the outro, there is a **riff** – a catchy, repeated melody – played on the bass guitar with an **improvised** guitar solo.

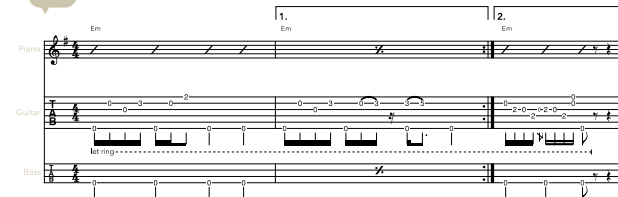
## Chords

'The Chain' uses just **five chords**:



The **intro** **drone**s on the **tonic** chord (I). The verses use the chord progression Em – A – D – C – Em. The **A** chord is **non-diatonic**, as **C#** doesn't belong in the key of E minor. The chorus uses the progression Am – Em – C – D, which is better understood in relative major key of **G**: ii – vi – IV – V, ending on a **half cadence**.

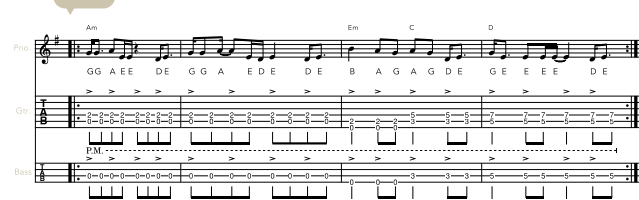
## Intro



## Vers-



## Chorus



## Outro

