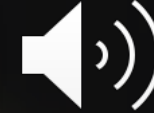




Jeff
BECK



What is the can you
for today?



To perform a song
by Jeff Beck

Read 12:16 PM

How are you going
to achieve this?



Recalling music theory to
support performance

Identifying the musical
elements of their music

Read 12:16 PM



Surrey,
England **Pin**

1944 – 2023



Notable Pieces

Brush With the Blues
Cause We've Ended as Lovers
A Day in the Life



Jeff
Beck **Follow**

Jeff Beck (1944–2023) was an iconic British guitarist known for his innovative and genre-defying style. A key figure in the development of rock, blues, and jazz fusion, Beck gained fame as a member of the Yardbirds and later as a solo artist. Renowned for his virtuosity, experimental approach, and mastery of tone, Beck influenced generations of guitarists. His work, including albums like *Blow by Blow* and *Wired*, cemented his legacy as one of the greatest guitarists in history.



Jeff Beck (1944–2023) was an iconic British guitarist known for his innovative and genre-defying style. A key figure in the development of rock, blues, and jazz fusion, Beck gained fame as a member of the Yardbirds and later as a solo artist. Renowned for his virtuosity, experimental approach, and mastery of tone, Beck influenced generations of guitarists. His work, including albums like *Blow by Blow* and *Wired*, cemented his legacy as one of the greatest guitarists in history.



Brush with the Blues

Jeff Beck



1



2

3



Jeff

Beck

Follow

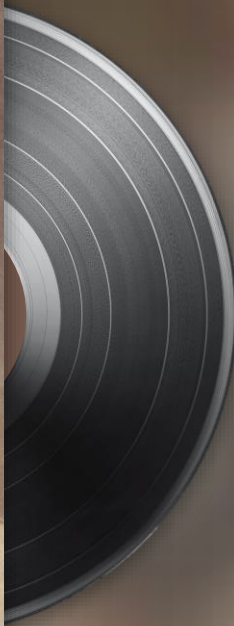
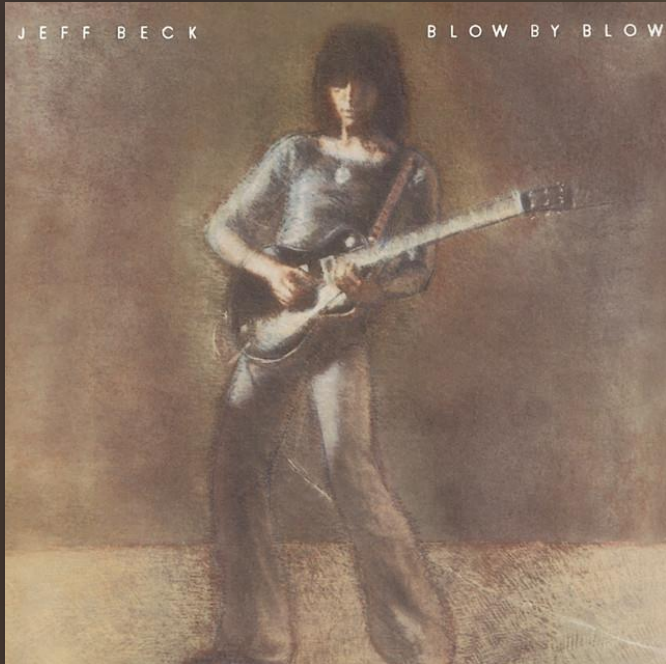
1999





Cause We Ended as Lovers

Jeff Beck



1



2

3



Jeff

Beck

Follow

1975





A Day in the Life (Live)

Jeff Beck



1



2

3



Jeff
Beck

[Follow](#)



2008





A Day in the Life
The Beatles / Jeff Beck / Wes Montgomery

Musical Elements

'A Day in the Life' is in 4/4 time. The tempo is allegro (163bpm). The dynamics is mainly mezzo forte throughout. The texture is homophonic (melody & accompaniment). The form/structure is ternary form (ABA).

Melody

The melody of 'A Day in the Life' is largely made from notes of the G major scale (G A B C D E F#):

Piano

Guitar

The melodic movement is a mixture of conjunct and disjunct. There is repetition used throughout. There is a chromatic note (A#) used in the final line, which adds a desired effect of instability!

Chords

'A Day in the Life' uses eight chords:

G B D F# B D E G B D F# A C E G C E A C E G Bb F A C

Most chords in the song are diatonic – made from notes belonging to the key/scale. However, C7 and F are both non-diatonic, making use of notes that don't belong to the key of G major – namely, Bb and F. The harmonic rhythm is semibreves (one chord each bar).

Verse

1.

2.

3.

4.

5.

6.

7.

8.

9.

10.

11.

12.

13.

14.

15.

16.

17.

18.

19.

20.

21.

22.

23.

24.

25.

26.

27.

28.

29.

30.

31.

32.

33.

34.

35.

36.

37.

38.

39.

40.

41.

42.

43.

44.

45.

46.

47.

48.

49.

50.

51.

52.

53.

54.

55.

56.

57.

58.

59.

60.

61.

62.

63.

64.

65.

66.

67.

68.

69.

70.

71.

72.

73.

74.

75.

76.

77.

78.

79.

80.

81.

82.

83.

84.

85.

86.

87.

88.

89.

90.

91.

92.

93.

94.

95.

96.

97.

98.

99.

100.

101.

102.

103.

104.

105.

106.

107.

108.

109.

110.

111.

112.

113.

114.

115.

116.

117.

118.

119.

120.

121.

122.

123.

124.

125.

126.

127.

128.

129.

130.

131.

132.

133.

134.

135.

136.

137.

138.

139.

140.

141.

142.

143.

144.

145.

146.

147.

148.

149.

150.

151.

152.

153.

154.

155.

156.

157.

158.

159.

160.

161.

162.

163.

164.

165.

166.

167.

168.

169.

170.

171.

172.

173.

174.

175.

176.

177.

178.

179.

180.

181.

182.

183.

184.

185.

186.

187.

188.

189.

190.

191.

192.

193.

194.

195.

196.

197.

198.

199.

200.

201.

202.

203.

204.

205.

206.

207.

208.

209.

210.

211.

212.

213.

214.

215.

216.

217.

218.

219.

220.

221.

222.

223.

224.

225.

226.

227.

228.

229.

230.

231.

232.

233.

234.

235.

236.

237.

238.

239.

240.

241.

242.

243.

244.

245.

246.

247.

248.

249.

250.

251.

252.

253.

254.

255.

256.

257.

258.

259.

260.

261.

262.

263.

264.

265.

266.

267.

268.

269.

270.

271.

272.

273.

274.

275.

276.

277.

278.

279.

280.

281.

282.

283.

284.

285.

286.

287.

288.

289.

290.

291.

292.

293.

294.

295.

296.

297.

298.

299.

300.

301.

302.

303.

304.

305.

306.

307.

308.

309.

310.

311.

312.

313.

314.

315.

316.

317.

318.

319.

320.

321.

322.

323.

324.

325.

326.

327.

328.

329.

330.

331.

332.

333.

334.

335.

336.

337.

338.

339.

340.

341.

342.

343.

344.

345.

346.

347.

348.

349.

350.

351.

352.

353.

354.

355.

356.

357.

358.

359.

360.

361.

362.

363.

364.

365.

366.

367.

368.

369.

370.

371.

372.

373.

374.

375.

376.

377.

378.

379.

380.

381.

382.

383.

384.

385.

386.

387.

388.

389.

390.

391.

392.

393.

394.

395.

396.

397.

398.

399.

400.

401.

402.

403.

404.

405.

406.

407.

408.

409.

410.

411.

412.

413.

414.

415.

416.

417.

418.

419.

420.

421.

422.

423.

424.

425.

426.

427.

428.

429.

430.

431.

432.

433.

434.

435.

436.

437.

438.

439.

440.

441.

442.

443.

444.

445.

446.

447.

448.

449.

450.

451.

452.

453.

454.

455.

456.

457.

458.

459.

460.

461.

462.

463.

464.

465.

466.

467.

468.

469.

470.

471.

472.

473.

474.

475.

476.

477.

478.

479.

480.

481.

482.

483.

484.

485.

486.

487.

488.

489.

490.

491.

492.

493.

494.

495.

496.

497.

498.

499.

500.

501.

502.

503.

504.

505.

506.

507.

508.

509.

510.

511.

512.

513.

514.

515.

516.

517.

518.

519.

520.

521.

522.

523.

524.

525.

526.

527.

528.

529.

530.

531.

532.

533.

534.

535.

536.

537.

538.

539.

540.

541.

542.

543.

544.

545.

546.

547.

548.

549.

550.

551.

552.

553.

554.

555.

556.

557.

558.

559.

560.

561.

562.

563.

564.

565.

566.

567.

568.

569.

570.

571.

572.

573.

574.

575.

576.

577.

578.

579.

580.

581.

582.

583.

584.

585.

586.

587.

588.

589.

590.

591.

592.

593.

594.

595.

596.

597.

598.

599.

600.

601.

602.

603.

604.

605.

606.

607.

608.

609.

610.

611.

612.

613.

614.

615.

616.

617.

618.

619.

620.

621.

622.

623.

624.

625.

626.

627.

628.

629.

630.

631.

632.

633.

634.

635.

636.

637.

638.

639.

640.

641.

642.

643.

644.

645.

646.

647.

648.

649.

650.

651.

652.

653.

654.

655.

656.

657.

658.

659.

660.

661.

662.

663.

664.

665.

666.

667.

668.

669.

670.

671.

672.

673.

674.

675.

676.

677.

678.

679.

680.

681.

682.

683.

684.

685.

686.

687.

688.

689.

690.

691.

692.

693.

694.

695.

696.

697.

698.

699.

700.

701.

702.

703.

704.

705.

706.

707.

708.

709.

710.

711.

712.

713.

714.

715.

716.

717.

718.

719.

720.

721.

722.

723.

724.

725.

726.

727.

728.

729.

730.

731.

732.

733.

734.

735.

736.

737.

738.

739.

740.

741.

742.

743.

744.

745.

746.

747.

748.

749.

750.

751.

752.

753.

754.

755.

756.

757.

758.

759.

760.

761.

762.

763.

764.

765.

766.

767.

768.

769.

770.

771.

772.

773.

774.

775.

776.

777.

778.

779.

780.

781.

782.

783.

784.

785.

786.

787.

788.

789.

790.

791.

792.

793.

794.

795.

796.

797.

798.

799.

800.

801.

802.

803.

804.

805.

806.

807.

808.

809.

810.

811.

812.

813.

814.

815.

816.

817.

818.

819.

820.

821.

822.

823.

824.

825.

826.

827.

828.

829.

830.

831.

832.

833.

834.

835.

836.

837.

838.

839.

840.

841.

842.

843.

844.

845.

846.

847.

848.

849.

850.

851.

852.

853.

854.

855.

856.

857.

858.

859.

860.

861.

862.

863.

864.

865.

866.

867.

868.

869.

870.

871.

872.

873.

874.

875.

876.

877.

878.

879.

880.

881.

882.

883.

884.

885.

886.

887.

888.

889.

890.

891.

892.

893.

894.

895.

896.

897.

898.

899.

900.

901.

902.

903.

904.

905.

906.

907.

908.

909.

910.

911.

912.

913.

914.

915.

916.

917.

918.

919.

920.

921.

922.

923.

924.

925.

926.

927.

928.

929.

930.

931.

932.

933.

934.

935.

936.

937.

938.

939.

940.

941.

942.

943.

944.

945.

946.

947.

948.

949.

950.

951.

952.

953.

954.

955.

956.

957.

958.

959.

960.

961.

962.

963.

964.

965.

966.

967.

968.

969.

970.

971.

972.

973.

974.

975.

976.

977.

978.

979.

980.

981.

982.</