



#Beyoncé



What is the can you  
for today?



To perform a song  
by Beyoncé

Read 12:42 PM

How are you going  
to achieve this?



Recalling music theory to  
support performance

Identifying the musical  
elements of their music

Read 12:42 PM



Houston, Texas,

**United States** Pin

**b. 1981**



## Notable Pieces

Crazy in Love

Love On Top

Single Ladies (Put a Ring On It)



**Beyoncé** [Follow](#)

Beyoncé Knowles-Carter (born 1981) is an American singer, songwriter, and actress, celebrated for her powerful voice, dynamic performances, and cultural impact. Rising to fame as the lead vocalist of Destiny's Child, she launched a hugely successful solo career with hits like "Crazy in Love," "Single Ladies," and "Formation." Known for her genre-blending music and bold social commentary, Beyoncé has earned numerous Grammy Awards, becoming one of the most influential and successful artists of her generation.



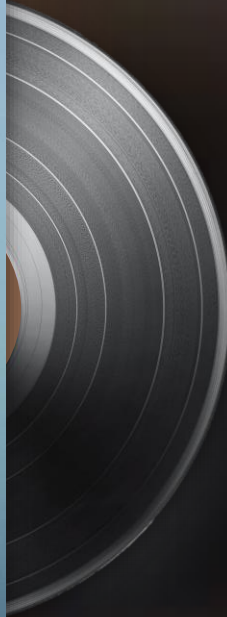
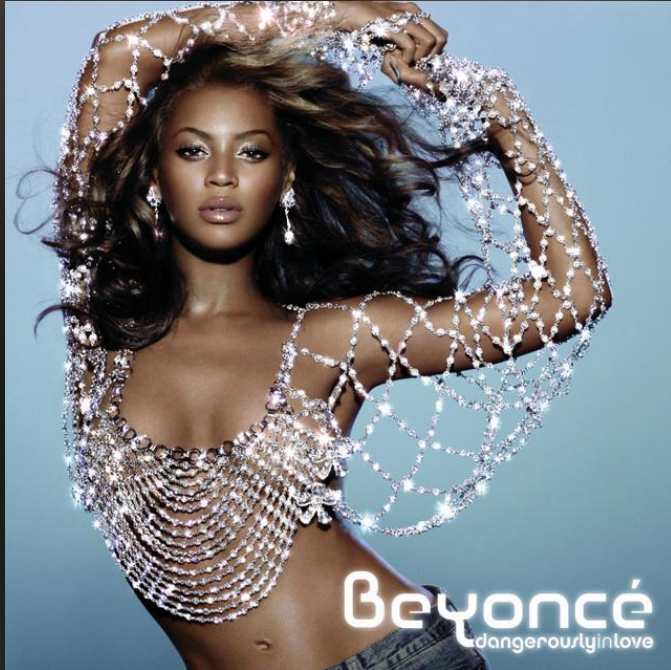


Beyoncé Knowles-Carter (born 1981) is an American singer, songwriter, and actress, celebrated for her powerful voice, dynamic performances, and cultural impact. Rising to fame as the lead vocalist of Destiny's Child, she launched a hugely successful solo career with hits like "Crazy in Love," "Single Ladies," and "Formation." Known for her genre-blending music and bold social commentary, Beyoncé has earned numerous Grammy Awards, becoming one of the most influential and successful artists of her generation.



# Crazy in Love

Beyoncé (feat. Jay-Z)



1



2

3



**Beyoncé** [Follow](#)

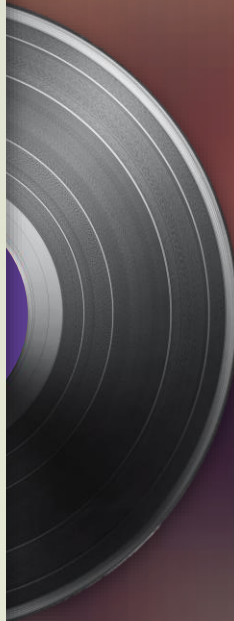
2003





# Love On Top

Beyoncé



**Beyoncé** [Follow](#)



1



2

3



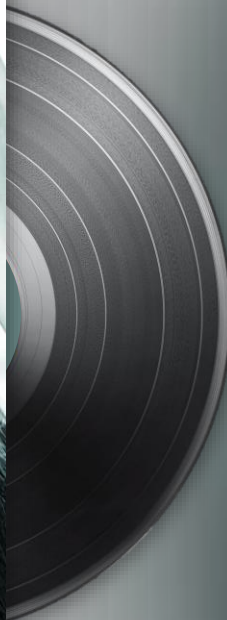
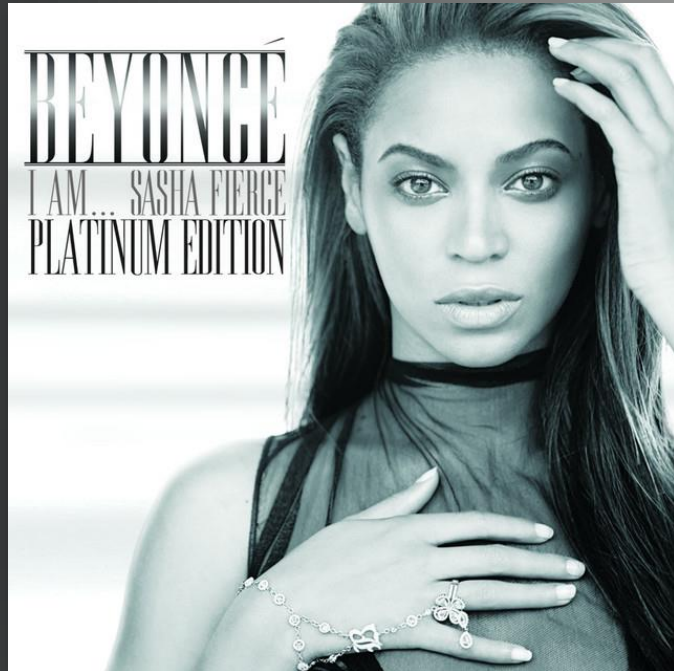
2011





# Single Ladies (Put a Ri...

Beyoncé



Beyoncé

[Follow](#)



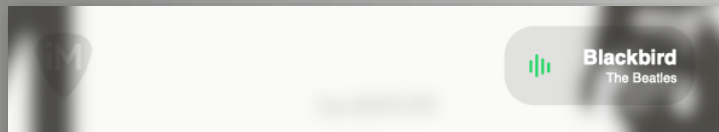
1

2

3

2008



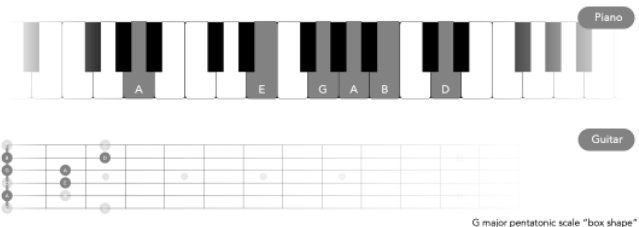


## Musical Elements

'Blackbird' is in mainly 4/4 time, though some bars are 3/4 or 2/4. The tempo is moderato (111bpm). The dynamics is mainly mezzo piano/forte throughout. The texture is homophonic (melody & accompaniment). The form/structure is verse-chorus form.

## Melody

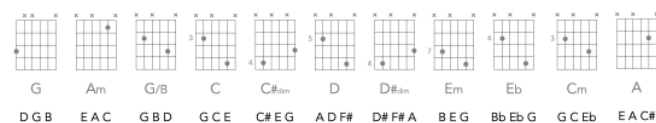
The melody of 'Blackbird' is made from notes of the G major pentatonic scale only (G A B D E):



The melody begins with static movement – the pitch stays the same – followed by a disjunct leap of a fifth. The melodic movement that follows is a mixture of conjunct and disjunct due to the scale intervals.

## Chords

'Blackbird' uses eleven chords:



The chord progression starts with G major (I). The progression then ascends from C – D – Em (IV – V – vi), with a non-diatonic chords played chromatically in between each. The progression then descends chromatically from Em (vi) back to G (I), with many diatonic and non-diatonic chords.

Intro

Verse

