



Claude Debussy



What is the can you
for today?



To perform a song
by Claude Debussy

Read 12:46 PM

How are you going
to achieve this?



Recalling music theory to
support performance

Identifying the musical
elements of their music

Read 12:46 PM



Paris,
France **Pin**

1862 – 1918



Notable Pieces

Clair de lune
Rêverie
Deux Arabesques



Claude
Debussy **Follow**

Claude Debussy (1862–1918) was a French composer, widely regarded as one of the most influential figures in classical music. A key figure in Impressionism, his work broke away from traditional structures, embracing innovative harmony, texture, and form. Debussy's most famous works include *Clair de Lune*, *Prélude à l'après-midi d'un faune*, and *La Mer*. His music, marked by its fluidity and sensuality, significantly impacted both classical and modern music, shaping the 20th-century soundscape.



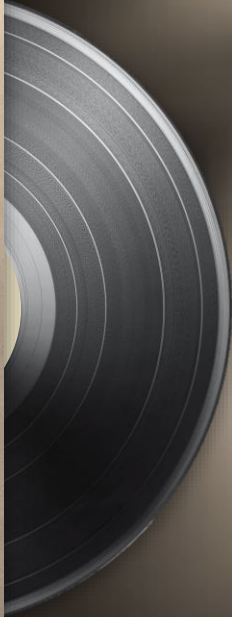


Claude Debussy (1862–1918) was a French composer, widely regarded as one of the most influential figures in classical music. A key figure in Impressionism, his work broke away from traditional structures, embracing innovative harmony, texture, and form. Debussy's most famous works include *Clair de Lune*, *Prélude à l'après-midi d'un faune*, and *La Mer*. His music, marked by its fluidity and sensuality, significantly impacted both classical and modern music, shaping the 20th-century soundscape.



Clair de lune

Claude Debussy



1



2

3



Claude

Debussy

[Follow](#)

1905





Rêverie

Claude Debussy



1



2

3



Claude

Debussy

[Follow](#)

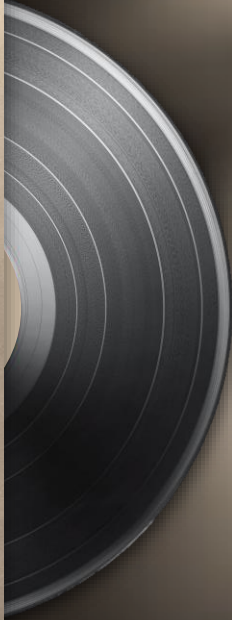
1884





Deux Arabesques

Claude Debussy



1



2

3



Claude

Debussy

[Follow](#)

1891



